



Laden Container Handler Gantry Truck Capacity 88000 lbs / 40000 kg C 400

SERIES 35610

Safety

Interlocks in the spreader twistlocks prevent unintentioned container release; sensors in the lift system prevent damage to containers and spreader by cutting-out lowering functions when the toplift is seated. Drive system inhibitors prevent incorrect downshift and reverse direction operation.

Performance

The combination of a high power, low speed – high torque engine, matched with an electrically controlled 4-speed transmission, together with a multi-pump hydraulic system, manage the efficient use of energy, with maximised speed of operation while reducing the wear on hydraulic components.

Comfort

The cabin, equipped to provide the operator with a low stress and spacious working environment, is provided with comfortable and intuitive ergonomics which are vital in creating the optimised working conditions necessary for sustained high performance operation.

Reliability

The high performance of the Linde Laden Container Handler is matched by the robustness of its construction. The high quality, heavy duty drive line components are designed to ensure maximum performance and durability. Heavy-duty main structural elements provide stress relief over the load bearing areas, thus ensuring lifelong product integrity.

Productivity

The elevated rearward positioning of the operators cabin optimises the visibility to the load handler for loading and unloading operations, through the mast when travelling, and also around the machine when working in confined operating areas; Combining the operator comfort and component performance with intuitive ergonomics further enhances the ease of operation.

Linde Material Handling

Linde

Technical data

Characteristics	1.1	Manufacturer		LINDE
	1.2	Model designation		C400/3
	1.3	Power unit: battery, diesel, LP gas, mains power		Diesel
	1.4	Operation: manual, pedestrian, stand-on, seated, order picker		Rider seated
	1.5	Load capacity	Q (lbs) Q (kg)	88000 40000
	1.6	Load center, retracted/extended	c (in) c (mm)	62/72 1580/1820
	1.8	Axle centre to face of unit	x (in) x (mm)	33 850
	1.9	Wheelbase	y (in) y (mm)	236 6000
Weight	2.1	Service weight	lbs kg	144932 65878
	2.2	Axle load with load, front/rear	lbs kg	193435/39497 87925/17953
	2.3	Axle load without load, front/rear	lbs kg	78714/66218 35779/30099
Wheels and tyres	3.1	Tyres, front/rear (SE = superelastic, P = pneumatic)		P/P
	3.2	Tyre size, front		18,00 x 25/40 pr
	3.3	Tyre size, rear		18,00 x 25/40 pr
	3.5	Wheels, number, front/rear (x=driven)		4x/2
	3.6	Tread width, front	b10 (in) b10 (mm)	135 3430
	3.7	Tread width, rear	b11 (in) b11 (mm)	110 2786
	Dimensions	4.1	Mast/fork carriage/truck tilt, forward/backward	α/β (°)
4.2		Height of mast, lowered - overall	h1 (in) h1 (mm)	246 6250
4.4		Lift height - overall	h3 (in) h3 (mm)	268 6800
4.5		Height of mast, extended - overall (carriage)	h4 (in) h4 (mm)	433 11010
4.7		Height of overhead guard (cabin)	h6 (in) h6 (mm)	185 4690
4.8		Height, operator's seat/stand-on platform	h7 (in) h7 (mm)	138 3500
4.12		Towing coupling height	h10 (in) h10 (mm)	24 600
4.15		Twistlock height lowered - minimum to ground	h13 (in) h3 (mm)	91 2300
4.19		Overall length - including attachments	l1 (in) l1 (mm)	427 10840
4.20		Length to face of unit - overall	l2 (in) l2 (mm)	317 8050
4.21		Overall width front/rear	b1/b2 (in) b1/b2 (mm)	179/134 4550/3400
4.24		Width of attachment 20'/40'	b3 (in) b3 (mm)	238/478 6050/12150
4.28		Reach travel spreader, forward/backward	l4 (in) l4 (mm)	5/5 120/120
4.31		Ground clearance, mast	m1 (in) m1 (mm)	11 270
4.32		Ground clearance, centre of wheelbase	m2 (in) m2 (mm)	18 450
4.33		Aisle width with 20' container	Ast (in) Ast (mm)	483 12270
4.34		Aisle width with 40' container	Ast (in) Ast (mm)	593 15050
4.35		Turning radius	Wa (in) Wa (mm)	323 8200
4.36		Minimum pivoting point distance	b13 (in) b13 (mm)	126 3190
Performance		5.1	Travel speed, with/without load	mp/h km/h
	5.2	Lift speed, with/without load	ft/m m/s	59/79 0.30/0.40
	5.3	Lowering speed, with/without load	ft/m m/s	98/98 0.50/0.50
	5.5	Tractive force, with/without load	daN N	514.8/- 234/-
	5.6	Maximum tractive force, with/without load	daN N	638/- 290/-
	5.7	Climbing ability, with/without load	1 kph %	30.9/-
	5.9	Acceleration time, with/without load	s	-/-
	5.10	Service brake		Wet disc
	6.4	Battery voltage, rated capacity	V/Ah	2x12/143
	Drive	7.1	Engine manufacturer/type	
7.2		Engine performance according to ISO 1585	bhp/kW	335 250
7.3		Rated speed	1/min	2100
		Maximum engine torque/speed	Nm/rpm	1674/1400
7.4		Number of cylinders/displacement	/cm ³	6/10820
7.5		Fuel consumption according to VDI cycle	gal/hr l/h	-
Others	8.1	Type of drive control		Torque converter 4/4
	8.2	Working pressure for attachments	bar	240
	8.3	Oil flow for attachments	gal/hr l/min	-
	8.4	Noise level, at operator's ear, overhead guard/cab	dB (A)	74
	8.5	Trailer coupling, design/type DIN	\emptyset (in) \emptyset (mm)	2 50

LINDE		LINDE	
C 400 / 4		C 400 / 5	
Diesel		Diesel	
Rider seated		Rider seated	
88000	40000	88000	40000
62/72	1580/1820	62/72	1580/1820
33	850	33	850
236	6000	236	6000
150522	68419	156618	71190
198834/39688	90379/18040	204752/39867	93069/18121
84020/66502	38191/30228	89841/66777	40837/30353
P/P		P/P	
18,00 x 25/40 pr		18,00 x 25/40 pr	
18,00 x 25/40 pr		18,00 x 25/40 pr	
4x/2		4x/2	
135	3430	135	3430
110	2786	110	2786
2/10		2/10	
305	7750	364	9250
386	9800	504	12800
552	14010	670	17010
185	4690	185	4690
138	3500	138	3500
24	600	24	600
91	2300	91	2300
427	10840	427	10840
317	8050	317	8050
179/134	4550/3400	179/134	4550/3400
238/478	6050/12150	238/478	6050/12150
5/5	120/120	5/5	120/120
11	270	11	270
18	450	18	450
483	12270	483	12270
593	15050	593	15050
323	8200	323	8200
126	3190	126	3190
15/16	23.3/24.9	15/16	23.3/24.9
59/79	0.30/0.40	59/79	0.30/0.40
98/98	0.50/0.50	98/98	0.50/0.50
514.8/-	234/-	514.8/-	234/-
638/-	290/-	638/-	290/-
30.9/-		30.9/-	
-/-		-/-	
Wet disc		Wet disc	
2x 12/143		2x 12/143	
Cummins QSM 11 / Electronic Tier III		Cummins QSM 11 / Electronic Tier III	
335	250	335	250
2100		2100	
1674/1400		1674/1400	
6/10820		6/10820	
-		-	
Torque converter 4/4		Torque converter 4/4	
240		240	
-		-	
74		74	
2	50	2	50

C 400 / 3			
8'6" Container		9'6" Container	
Q	Height (Inch)	Q	Height (Inch)
88000 lbs	306	88000 lbs	342
88000 lbs	204	88000 lbs	228
88000 lbs	102	88000 lbs	114
to c = 62/72 inches			

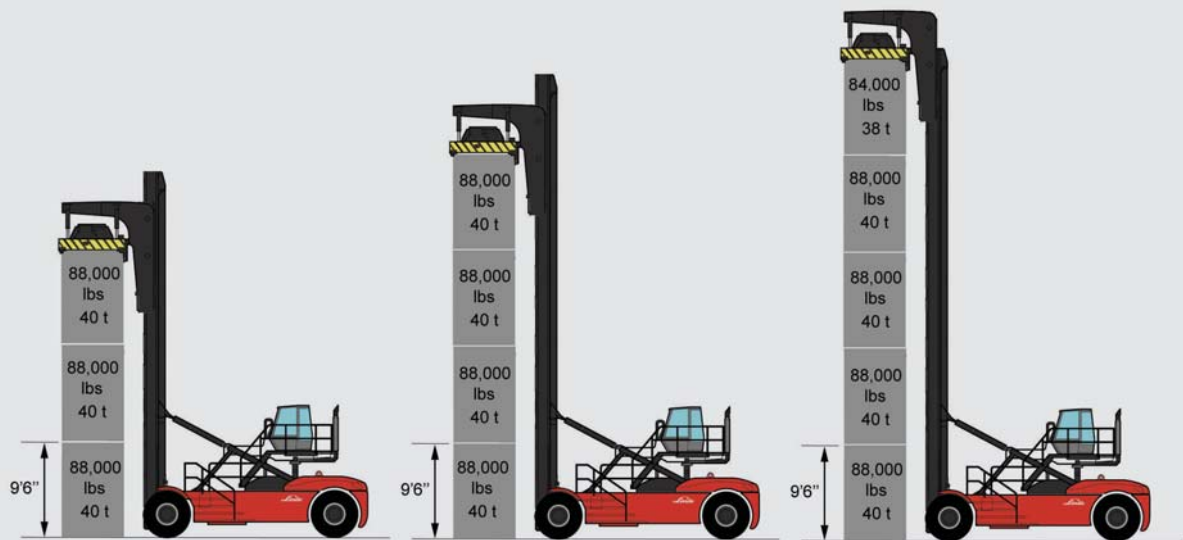
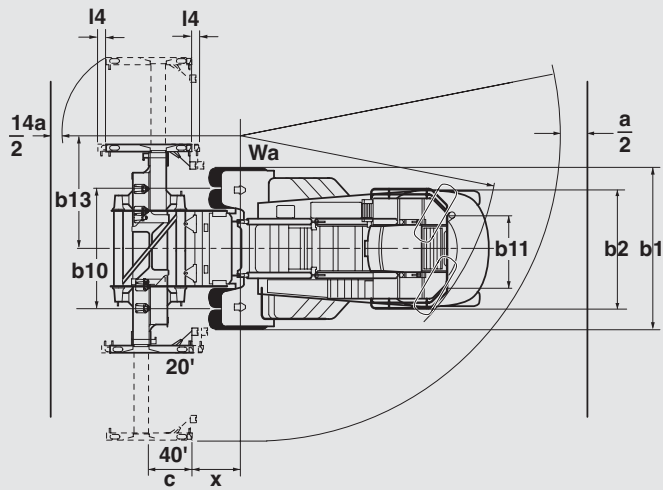
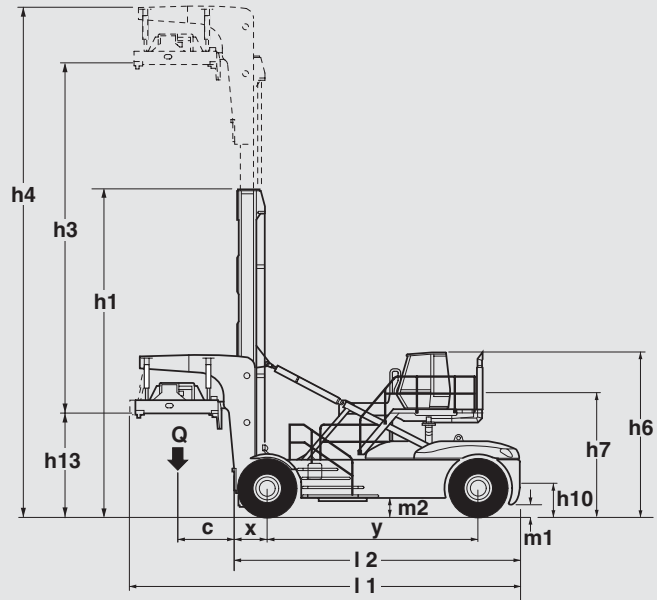
C 400 / 4			
8'6" Container		9'6" Container	
Q	Height (Inch)	Q	Height (Inch)
88000 lbs	408	88000 lbs	456
88000 lbs	306	88000 lbs	342
88000 lbs	204	88000 lbs	228
88000 lbs	102	88000 lbs	114
to c = 62/72 inches			

C 400 / 5			
8'6" Container		9'6" Container	
Q	Height (Inch)	Q	Height (Inch)
84000 lbs	510	84000 lbs	570
88000 lbs	408	88000 lbs	456
88000 lbs	306	88000 lbs	342
88000 lbs	204	88000 lbs	228
88000 lbs	102	88000 lbs	114
to c = 62/72 inches			

C 400 / 3			
8'6" Container		9'6" Container	
Q	Height (mm)	Q	Height (mm)
40 t	7773	40 t	8688
40 t	5182	40 t	5792
40 t	2591	40 t	2896
to c = 1518/1820 mm			

C 400 / 4			
8'6" Container		9'6" Container	
Q	Height (mm)	Q	Height (mm)
40 t	10364	40 t	11584
40 t	7773	40 t	8688
40 t	5182	40 t	5792
40 t	2591	40 t	2896
to c = 1518/1820 mm			

C 400 / 5			
8'6" Container		9'6" Container	
Q	Height (mm)	Q	Height (mm)
40 t	12955	40 t	14480
40 t	10364	40 t	11584
40 t	7773	40 t	8688
40 t	5182	40 t	5792
40 t	2591	40 t	2896
to c = 1518/1820 mm			



Oil capacities	in US gal	in litre
Engine oil	9.0	34
Diesel	255.0	972
Engine coolant	11.5	26
Hydraulic system oil	160.0	600
Brake system oil	26.5	100

Oil capacities	in US gal	in litre
Brake system additive	1.5	5
Drive axle differential	23.5	89
Drive axle hub	3.0	11
Steer axle hub	2.5	9
Transmission	21.0	80

Standard and optional equipment

Standard equipment

High mounted, rearward and centrally positioned cabin with access staircase on left side, full cabin platform and emergency ladder on right side

Fully equipped driver's cabin with hinged doors; wipers and washers for windscreen, rear screen and overhead screen, heater and demister

Abundant storage space for writing materials, beverage cans, etc.

Hydraulic-suspension comfort-class seat with wide range of adjustment

Hydraulic pilot line multi-function lever enabling precise load positioning with automatic anti-stall function

Adjustable-angle steering wheel

Effortless hydrostatic power steering; lock-to-lock at standstill

Engine intake air cleaner with integrated safety element

High performance hydraulic filters preserving maximum purity of oil for long life of all hydraulic components

On-demand working hydraulics, oil supply by multi-pump installation

Comprehensive display units; monitor all key components

Central master warning light

Modern QMS II Cummins stage III diesel engine with electronically controlled single-rail fuel injection system meeting European and international emission regulations

Heavy-duty automatic 4-speed electric powershift transmission with integrated safety protection; declutch and anti "Plugging"

Robust double hub reduction drive axle, incorporating oil bath type multi-disk brakes with zero maintenance requirements

Tilt system anti-sway hydraulic lock valve – preventing unintentioned load tilt

Reverse section, container handling mast

Pneumatic tyres

Telescopic toplift spreader 20' – 40' extension

Outreach 10 inches / 240 mm

Sideshift 12 inches / 300 mm +/-

Road lighting with reverse lights and audible warning

Cab mounted working lights 2 pairs

Reverse driving mirrors – chassis mounted

Interior rearview mirror

Battery isolator connectors

Options

3, 4 or 5 high container stacking mast

Slope pile attachment

Forced air conditioning

Cabin pre-heat system – fuel burning or electrical

Central greasing system – chassis, chassis & gantry, chassis gantry & spreader

High level air intake – cabin (heater system only)

Heated operators seat

Additional seat

Tinted glass

Sliding window – right side

Air suspension seat with compressor

Electrical socket in cab – 12 volt

Tilting cabin

Hydraulic accumulator

Load weight device

Heated reverse driving mirrors

Panoramic interior mirror

Radio with compact disc unit and speakers

Spreader mounted working lights 2 or 4

Mast mounted lights 2 or 4

Cab mounted mirror – right side; standard or heated

Rotating beacon or flashing beacon

Manual extension stops 20/24/40 or 20/24/30/40 or 20/30/40

Sun blind – front and top

Fire extinguisher (2 kg)

Engine coolant heater

Hydraulic tank heater

Brake tank heater

Counterweight mounted camera with monitor

Handrails – on steps left & right

Low step left & right

Custom paintwork

Other special features on request

Features

Power and drive system

- Powerful engine – high torque at low speed
- 4 speed electrically controlled transmission
- Wide-track drive axle with wet disk brake system
- Drive line protection with built-in operational inhibitors, downshifting, reverse direction change and gear change ratio

Load sensing hydraulics

- Highly efficient spur gear multi-pump installation
- Switch-phased pumps supply metered oil for function selected
- Extended oil change frequency by reducing operational wear



Stable, robust chassis

- Heavy duty main chassis for optimised stress handling
- Unique mast construction for container load handling
- Heavy gauge side panels providing impact protection

Linde load management

- Head-up twistlock condition display
- duplicated twistlock display on rear of mast channel
- toplift mounted 'flags' for visible recognition of twistlock position

Modern powerfull engine

- Diesel motor Stage III emissions
- Turbocharger and Intercooler
- 6 cylinder – 11 litre
- 250 kW (335 bhp) @ 2100 rpm
- Maximum torque 1674 @ 1400 rpm



Operators compartment

- Fully adjustable high quality seat
- Forced air heating and ventilation system
- Adjustable steering column
- Adjustable armrest and hydraulic control console
- Optimised position of operator control instrumentation

Comprehensive display

- Engine – water temperature, oil pressure
- Transmission – oil pressure and temperature
- Hydraulic & Brake – oil temperature
- Fuel – level
- Electrical – battery state
- Air – cleaner restriction warning

Telescopic spreader

- 20' – 40' extension
- Outreach 10 inches / 240 mm
- sideshift 11 inches / 300 mm +/-
- internal extension cylinders
- Slope pile +/- 5,5 degrees
- twistlock safety interlock
- non-hydraulic cylinder suspended toplift

Linde AG

Linde Material Handling Division, Postfach 10 01 36, 63701 Aschaffenburg, Germany
Phone +49.60 21.99-0, Fax +49.60 21.99-15 70, www.linde-forklifts.com, info@linde-forklifts.com

Linde Material Handling